



曲线元素表

交点号	交点坐标		交点桩号	转角值	曲线要素值(米)					
	X(N)	Y(E)			半径	缓和曲线长	切线长度	曲线长度	外距	校正值
JD27	4949858.365	683494.073	K2+187.345	12°34'29.8"(Z)	200		22.036	43.895	1.210	0.177
JD28	4949878.612	683544.360	K2+241.379	32°18'26.9"(Y)	70		20.276	39.471	2.877	1.080
JD29	4949855.333	683671.489	K2+369.541	19°32'46.2"(Z)	80		13.780	27.292	1.178	0.268
JD30	4949866.131	683738.382	K2+437.032	43°44'30"(Z)	50		20.070	38.172	3.878	1.969
JD31	4949911.559	683772.725	K2+492.012	21°56'49.6"(Y)	90		17.451	34.474	1.676	0.428
JD32	4949966.091	683863.610	K2+597.574	60°49'09.1"(Y)	30		17.608	31.845	4.785	3.370
JD33	4949921.229	683941.770	K2+684.323	59°46'49"(Z)	30		17.244	31.301	4.603	3.187
JD34	4949945.964	683984.741	K2+730.718	49°21'22.1"(Y)	30		13.785	25.843	3.015	1.726
JD35	4949930.473	684028.655	K2+775.557	7°33'03.1"(Y)	156.719		10.342	20.653	0.341	0.030
JD36	4949920.543	684048.159	K2+797.414	42°05'43.7"(Z)	30		11.545	22.041	2.145	1.048

注：
 1: 比例1:2000。
 2: 平面坐标系采用国家2000坐标系，中央子午线81°。

中徽交通科技有限公司
 公路行业(公路)专业乙级
 资质证书号: A161013290

新疆艾比湖湿地国家级自然保护区
 2024年中央财政林业草原(国家级自然保护区)
 巡护道路维修改造工程

平面设计图(1号线)

设计

秦浩

复核

杨森

审核

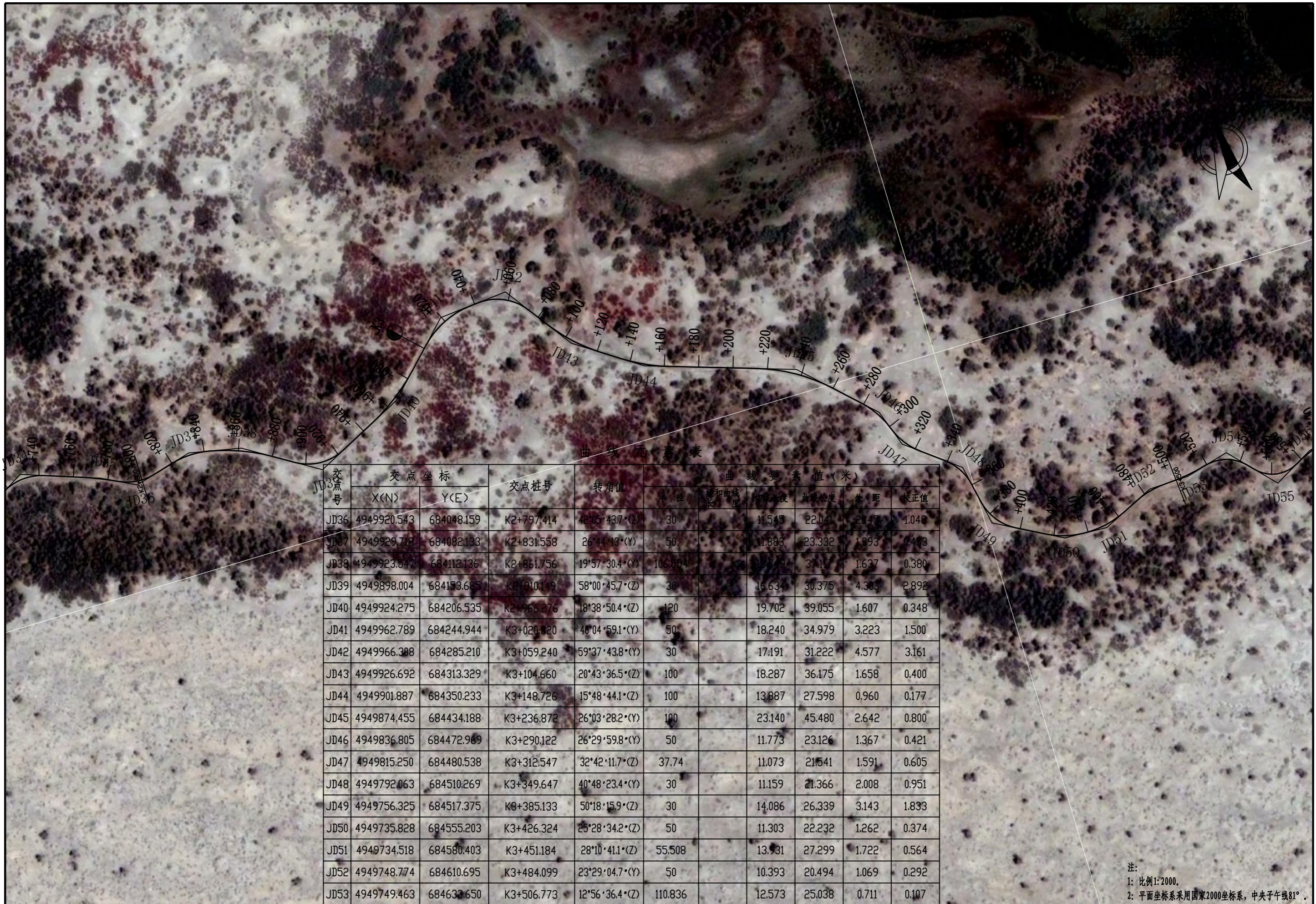
向洪

日期

2024.7

图号

DL-02



曲线元素表

交点号	交点坐标		交点桩号	转角值	曲线要素值(米)					
	X(N)	Y(E)			半径	缓和曲线长	切线长度	曲线长度	外距	校正值
JD36	4949920.543	684048.159	K2+797.414	42°05'43.7°(Z)	30		11.545	22.041	2.145	1.048
JD37	4949929.718	684082.133	K2+831.558	26°44'13°(Y)	50		11.883	23.332	1.993	0.443
JD38	4949923.547	684112.136	K2+861.756	19°57'30.4°(Y)	106.554		13.719	37.117	1.637	0.380
JD39	4949898.004	684153.685	K2+910.149	58°00'45.7°(Z)	30		16.634	30.375	4.303	2.892
JD40	4949924.275	684206.535	K2+966.276	18°38'50.4°(Z)	120		19.702	39.055	1.607	0.348
JD41	4949962.789	684244.944	K3+020.920	40°04'59.1°(Y)	50		18.240	34.979	3.223	1.500
JD42	4949966.308	684285.210	K3+059.240	59°37'43.8°(Y)	30		17.191	31.222	4.577	3.161
JD43	4949926.692	684313.329	K3+104.660	20°43'36.5°(Z)	100		18.287	36.175	1.658	0.400
JD44	4949901.887	684350.233	K3+148.726	15°48'44.1°(Z)	100		13.887	27.598	0.960	0.177
JD45	4949874.455	684434.188	K3+236.872	26°03'28.2°(Y)	100		23.140	45.480	2.642	0.800
JD46	4949836.805	684472.969	K3+290.122	26°29'59.8°(Y)	50		11.773	23.126	1.367	0.421
JD47	4949815.250	684480.538	K3+312.547	32°42'11.7°(Z)	37.74		11.073	21.541	1.591	0.605
JD48	4949792.063	684510.269	K3+349.647	40°48'23.4°(Y)	30		11.159	21.366	2.008	0.951
JD49	4949756.325	684517.375	K3+385.133	50°18'15.9°(Z)	30		14.086	26.339	3.143	1.833
JD50	4949735.828	684555.203	K3+426.324	25°28'34.2°(Z)	50		11.303	22.232	1.262	0.374
JD51	4949734.518	684580.403	K3+451.184	28°10'41.1°(Z)	55.508		13.931	27.299	1.722	0.564
JD52	4949748.774	684610.695	K3+484.099	23°29'04.7°(Y)	50		10.393	20.494	1.069	0.292
JD53	4949749.463	684633.650	K3+506.773	12°56'36.4°(Z)	110.836		12.573	25.038	0.711	0.107

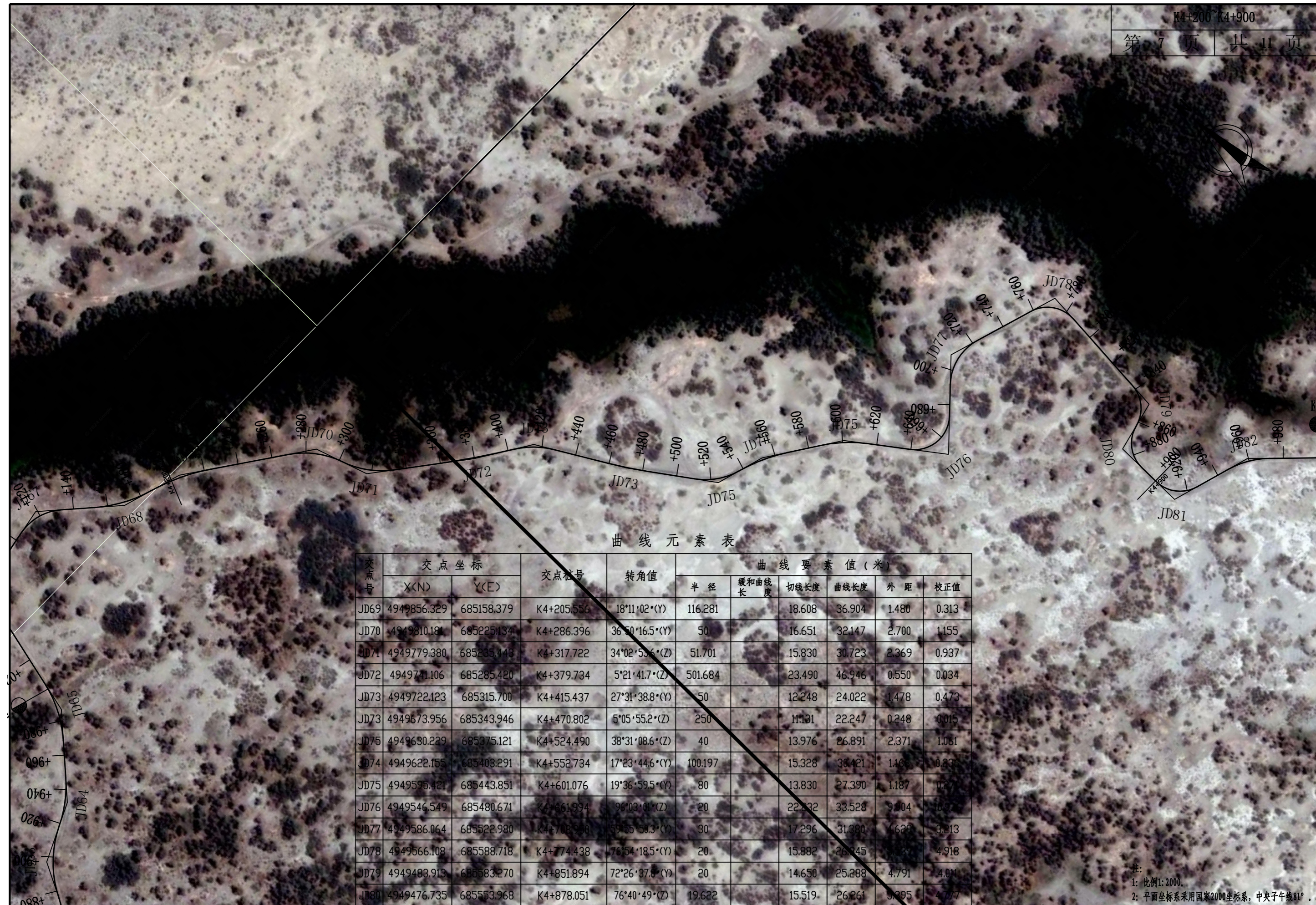
注：
1: 比例1:2000.
2: 平面坐标系采用国家2000坐标系, 中央子午线81°.



桩号	X	Y	里程	曲线要素	半径 R	偏角 α	切线长 T	曲线长 L	外矢距 E	中矢距 M	其他
JD54	4949749.48	684659.3	K3+720.00	18°11'02"(Y)	110.836						
JD55	4949756.188	684659.3	K3+720.00	18°11'02"(Y)	23.332						
JD55	4949730.592	684683.0	K3+720.00	18°11'02"(Y)	20						
JD56	4949739.95	684706.7	K3+720.00	18°11'02"(Y)	59.368				10.67	21.17	
JD57	4949759.55	684730.4	K3+720.00	18°11'02"(Y)	20				10.70	22.075	
JD58	4949710.871	684754.17	K3+720.00	18°11'02"(Y)	20				17.502	31.687	40.00
JD59	4949696.997	684832.622	K3+745.93	21°49'38"(Z)	26				9.678	19.043	0.234
JD60	4949670.211	684862.535	K3+785.914	21°49'38"(Z)	20				18.151	29.479	7.823
JD61	4949703.083	684898.273	K3+827.648	18°13'57.9"(Y)	20				20.716	21.350	0.081
JD62	4949720.280	684927.615	K3+861.577	38°51'22.7"(Z)	50				14.782	28.745	0.819
JD63	4949753.439	684944.281	K3+897.869	37°51'52.7"(Y)	51.132				22.229	29.727	3.722
JD64	4949769.213	684977.401	K3+932.918	22°49'38.9"(Z)	71.111				18.331	31.45	0.381
JD65	4949809.545	685013.341	K3+986.559	28°51'10.9"(Y)	70				15.251	32.77	0.764
JD66	4949821.057	685031.938	K4+069.402	66°36'52.5"(Y)	20				13.253	3.931	0.030
JD67	4949900.667	685084.693	K4+120.032	51°53'29.3"(Y)	30				14.52	2.863	2.023
JD68	4949866.610	685123.608	K4+169.853	24°53'07.9"(Z)	80				17.22	1.924	0.557
JD69	4949856.329	685158.379	K4+205.556	18°11'02"(Y)	116.281				36.92	1.880	0.313



注：
1: 比例1:2000。
2: 平面坐标系采用国家2000坐标系，中央子午线81°。



曲线元素表

交点号	交点坐标		交点桩号	转角值	曲线要素值(米)					
	X(N)	Y(E)			半径	缓和曲线长	切线长度	曲线长度	外距	校正值
JD69	4949856.329	685158.379	K4+205.556	18°11'02"(Y)	116.281		18.608	36.904	1.480	0.313
JD70	4949810.181	685225.134	K4+286.396	36°50'16.5"(Y)	50		16.651	32.147	2.700	1.155
JD71	4949779.380	685235.443	K4+317.722	34°02'53.6"(Z)	51.701		15.830	30.723	2.369	0.937
JD72	4949741.106	685285.420	K4+379.734	5°21'41.7"(Z)	501.684		23.490	46.946	0.550	0.034
JD73	4949722.123	685315.700	K4+415.437	27°31'38.8"(Y)	50		12.248	24.022	1.478	0.473
JD73	4949673.956	685343.946	K4+470.802	5°05'55.2"(Z)	250		11.131	22.247	0.248	0.015
JD75	4949630.229	685375.121	K4+524.490	38°31'08.6"(Z)	40		13.976	26.891	2.371	1.061
JD74	4949622.155	685403.291	K4+552.734	17°23'44.6"(Y)	100.197		15.328	30.421	1.463	0.236
JD75	4949595.421	685443.851	K4+601.076	19°36'59.5"(Y)	80		13.830	27.390	1.187	0.277
JD76	4949546.549	685480.671	K4+661.994	96°03'01"(Z)	20		22.232	33.528	9.904	16.926
JD77	4949586.064	685522.980	K4+708.956	59°55'50.3"(Y)	30		17.296	31.380	6.626	3.213
JD78	4949566.108	685588.718	K4+774.438	76°54'18.5"(Y)	20		15.882	26.845	3.339	4.918
JD79	4949483.913	685583.270	K4+851.894	72°26'37.6"(Y)	20		14.650	25.288	4.791	4.011
JD80	4949476.735	685553.968	K4+878.051	76°40'49"(Z)	19.622		15.519	26.261	9.895	4.777

注：
1: 比例1:2000。
2: 平面坐标系采用国家2000坐标系，中央子午线81°。